

Teledyne BlueView

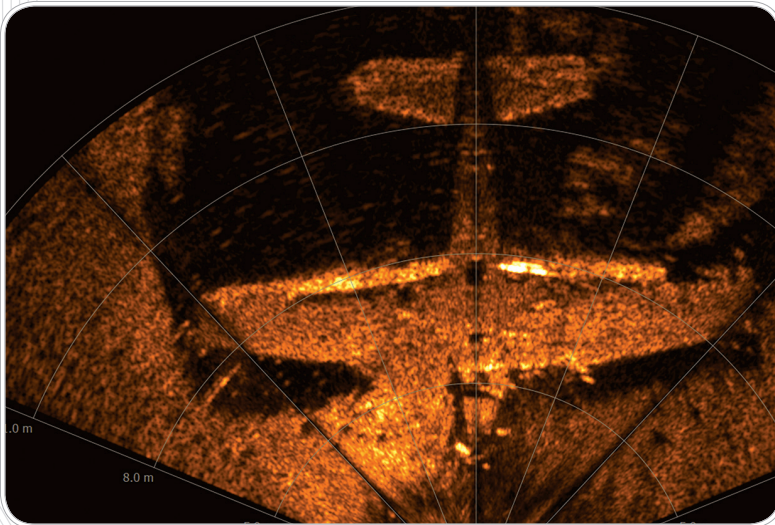
M900 Series

2D Imaging Sonar

The most compact, full featured 2D Multibeam Imaging Sonar available. The M Series fits where other multibeam imaging sensors can't, delivering crisp, real-time streaming sonar imagery.

The M Series is:

- Lightest in class: 0.86 lbs. in water
- Widest field-of-view in class: 130°
- Lowest power in class: < 20 watts
- Capture sonar, video, and position data in software package



Sunken WWII Grumman F6F Hellcat Fighter Aircraft.

PRODUCT FEATURES AND APPLICATIONS

All M Series sonar operate while in motion or from a stationary position delivering real-time imagery and data.

FEATURES

- Real-time video like imagery
- Motion immune imagery
- Record raw acoustic data for enhanced controls during playback

- Point to point measurements
- Multiple comm port setup for positioning instrumentation integration
- Automatic and manual acoustic source level control

APPLICATIONS

- ROV navigation
- Object detection
- Target tracking
- Obstacle avoidance

- Operations monitoring
- Equipment/tool placement
- Search and recovery
- Area survey

M900 Series

2D Imaging Sonar



TECHNICAL SPECIFICATIONS

		M900-90	M900-130
Sonar	Field-of View	90°	130°
	Max Range	100 m (328 ft)	100 m (328 ft)
	Optimum Range	2-60 m (6.6-197 ft)	2-60 m (6.6-197 ft)
	Beam Width	1 x 20°	1 x 20°
	Beam Spacing	0.18°	0.18°
	No. of Beams (90, 130 FOV)	512	512
	Range Resolution	1.3 cm (0.54 in)	1.3 cm (0.54 in)
	Update Rate* within Optimum Range	Up to 25 Hz	Up to 25 Hz
Operating Frequency	900k Hz	900 kHz	
Interface	Supply Voltage	12-48 VDC	12-48 VDC
	Max Power Consumption**	20 W	20 W
	Connectivity	Ethernet	Ethernet
Mechanical	Weight in Air (std/deep)	4 lbs / 10.54 lbs	4 lbs / 10.54 lbs
	Weight in water (std/deep)	0.86 lbs / 5.09 lbs	0.86 lbs / 5.09 lb
	Depth rating (std/deep)	1000 m (3280 ft) / 4000 m (13120 ft)	1000 m (3280 ft) / 4000 m (13120 ft)
	Dimensions*** (L x W x H) (std/deep)	7.56 in x 4.0 in x 4.0 in (4.0 inch can) / 10.2 in x 5.0 in x 5.0 in (5.0 inch can)	7.56 in x 4.0 in x 4.0 in (4.0 inch can) / 10.2 in x 5.0 in x 5.0 in (5.0 inch can)

* Range-dependent

** Non-VDSL unit at 24 VDC

*** Length does not include connector length



The Teledyne BlueView M900-130 Sonar accessories and case.

Specifications subject to change without notice. © 2017 Teledyne BlueView, Inc. All rights reserved.

Teledyne RESON A/S

Denmark
Tel: +45 4738 0022
info@teledyne-reson.com

Teledyne RESON Inc.

U.S.A.
Tel: +1 805 964-6260
sales@teledyne-reson.com

Teledyne RESON U.K. Ltd.

Scotland U.K.
Tel: +44 1224 709 900
sales@reson.co.uk

Teledyne RESON B.V.

The Netherlands
Tel: +31 (0) 10 245 1500
rbv-info@teledyne-reson.nl

Teledyne RESON GmbH

Germany
Tel: +49 421 3770 9600
hydro-sales@teledyne-reson.com

Teledyne RESON Shanghai Office

Shanghai
Tel: +86 21 6876 8038
shanghai@teledyne-reson.com